

spee-dee™ build-up

PULPDENT®
Dental Innovation Since 1947

MULTI-PURPOSE CORE AND TOOTH BUILD-UP RESIN

Dual Cure • Fluoride Releasing • Radiopaque

One-Step Post and Core

Spee-Dee Build-Up is specially formulated for one-step post cementation and core build up, ensuring a homogenous, one piece internal structure.

No Ditching or Gouging

Spee-Dee Build-Up really does cut like dentin. Rotary instruments transition smoothly from dentin to Spee-Dee without ditching or gouging, cut smoothly and accurately, and do not gum up or chatter.

Moisture Tolerant

The unique moisture tolerant chemistry has self-adhesive and self-etching properties.

Kit includes automix cartridge with angled tips for controlled dispensing.



Clinical Uses

- Post and core build-up after endo
- Direct bonded core without a post
- Vital tooth build-up for crown prep
- Re-cementing loose post and core
- Base/liner under restorations

Physical Properties

Compressive strength:	40,625 psi / 280
Flexural strength:	MPa 14,065 psi
Self-cure setting time at 37 °C:	3:10 minutes
Light cure setting time:	20 seconds
Depth of cure:	4 mm

SBU50	1.2 mL syringe Klear-Veneer Clear Shade
SBU	Automix cartridge of 25mL (41.5 gm) + 20 Automix tips
FD20	20 Automix tips

DS50	Dispenser for 50mL, 1:1 Automix Cartridge
DS24	Dispenser for 25mL, 1:1 Automix Cartridge

spee-dee™ build-up

PULPDENT®
Dental Innovation Since 1947

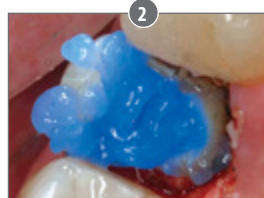
MULTI-PURPOSE CORE AND TOOTH BUILD-UP RESIN

Dual Cure • Fluoride Releasing • Radiopaque • Moisture Tolerant • Cuts Like Dentin • One-step Post and Core Build-up

CASE 1: Post cementation and core build-up



After endodontic treatment, a molar is prepared with two post holes.



Pulpdent Etch-Rite is applied to the post holes and the preparation for 15 seconds (optional step).



After rinsing thoroughly, removing excess moisture and leaving the tooth slightly moist, Spee-Dee Build-Up is dispensed into the post holes and around the preparation.



The posts are inserted with a twisting, up and down motion to ensure uniform coverage of Spee-Dee Build-Up, and then light cured for 20 seconds.



Spee-Dee Build-Up is now applied around the posts to the occlusal level.



The post and core preparation is trimmed and finished and ready for an impression or digital scan.

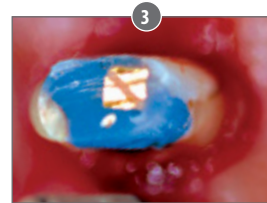
CASE 2: patching a defective core



A radiograph showed a defect at the crown margin of the upper right second bicuspid.

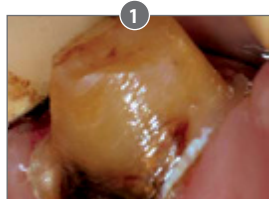


Upon removal of the crown, the carious lesion was clearly visible. The old core material is blue.

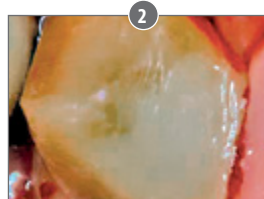


After removing the caries, Spee-Dee Build-Up was used to patch up the core without etching or bonding agents.

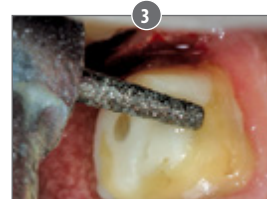
CASE 3: patching an existing crown prep



Removal of an old crown revealed a carious lesion in the cervical area.



In minutes the caries was removed and Spee-Dee Build-Up was used to patch the defect.



Spee-Dee Build-Up provides the same resistance to your rotary instrument as dentin.

PULPDENT® Corporation

80 Oakland Street, Watertown MA 02472 USA • Tel. (617) 926-6666 / (800) 343-4342 / Fax (617) 926-6262 • sales@pulpdent.com • www.pulpdent.com