

ACTIVA™ Presto™

Universal Stackable Composite ■ Light Cure



Nature's Magic in a Dental Composite

The first light cure composite developed to mimic the properties of natural teeth

ACTIVA Presto is a dynamic, moisture-friendly, mineral-enriched composite that releases and recharges calcium, phosphate, and fluoride, delivering minerals teeth need to stay healthy.

ACTIVA Presto is a universal, stackable and shapeable nanohybrid material that holds its shape and does not slump. It is formulated with a patented rubberized resin that is strong, durable, and wear and fracture resistant, even in thin areas on bevel margins.

ACTIVA Presto is versatile, esthetic, highly radiopaque, and indicated for all classes of cavities and load bearing applications. It contains no Bis-GMA, no Bisphenol A, and no BPA derivatives. It is available in popular shades plus A4 and A6 cervical shades that are especially useful when treating older patients.

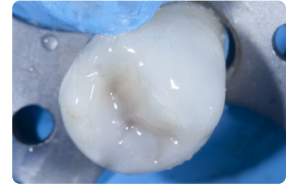
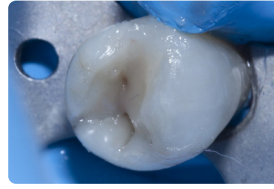
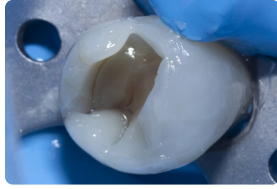
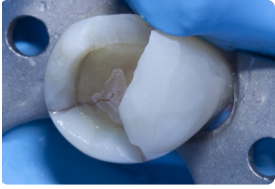
- Mineral-enriched, esthetic composite
- Dynamic, moisture-friendly material responds to pH changes in the oral environment
- Releases/recharges calcium, phosphate and fluoride
- Tough, durable rubberized resin resists wear, fracture and chipping
- Stackable, shapeable, low flow, no pull back, does not slump
- Contains no Bis-GMA, no Bisphenol A, and no BPA derivatives
- For all restorative procedures and load bearing applications

A P P L I C A T I O N S

1 Durable, wear resistant, and indicated for load bearing applications

Class II repair using ACTIVA Presto A2 shade

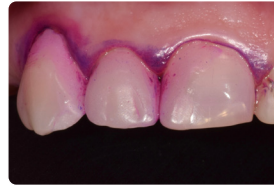
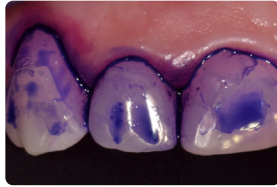
Photos courtesy of Dr. Delfin Barquero - Costa Rica



2 ACTIVA Presto A1 and A2 deliver essential minerals and esthetics for high risk patient

At one-month follow up, disclosing solution shows minimal plaque. Note excellent tissue health.

Photos courtesy of Dr. Stefano Daniele - Italy



3 Solution for failed molar restoration

ACTIVA Presto placed as "enamel" layer over ACTIVA BioACTIVE-RESTORATIVE bulk fill dentin replacement

Photos courtesy of Dr. Robert A. Lowe - USA



4 Stackable, shapeable viscosity is ideal for conservative dentistry and facilitates access and interproximal placement

Restoration fractured along distal marginal ridge replaced with ACTIVA Presto A3 shade

Photos courtesy of Dr. Robert Ho - USA



5 Versatile material provides easy access, placement, and esthetics

Vertical crown fracture on upper left central incisor repaired with ACTIVA Presto

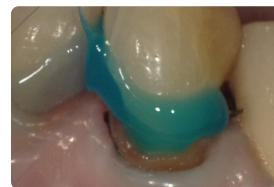
Photos courtesy of Dr. Les Rykiss - Canada



6 Shade matching and blending for multi-surface cervical restoration

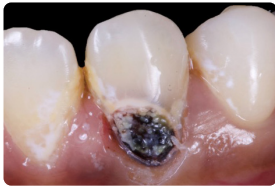
Restored with ACTIVA Presto A35 on mesial and A6 on buccal

Photos courtesy of Dr. Lou Graham - USA



7 Esthetic solution for Class V challenges

ACTIVA Presto A2 shade delivers esthetic result



Photos courtesy of Dr. Priti Lamba - India

8 Smile zone esthetics

Esthetic repair of anterior tooth with ACTIVA Presto



Photos courtesy of Dr Ray Kimsey - USA

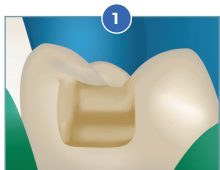
9 Geriatric Cervical Solution

Cervical repair with ACTIVA Presto A6 shade. Can you find it?

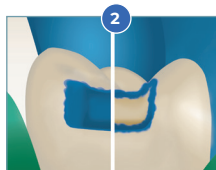


Photo courtesy of Dr Robert Lowe - USA

CHAIRSIDE GUIDE



1 Prepare cavity
Bevel enamel margins



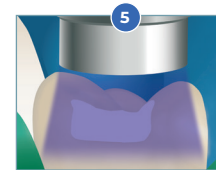
2 Total or selective etch



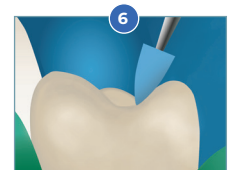
3 Apply bonding agent
per instructions



4 Place Presto in
2.5 mm increments



5 Light cure after each
layer

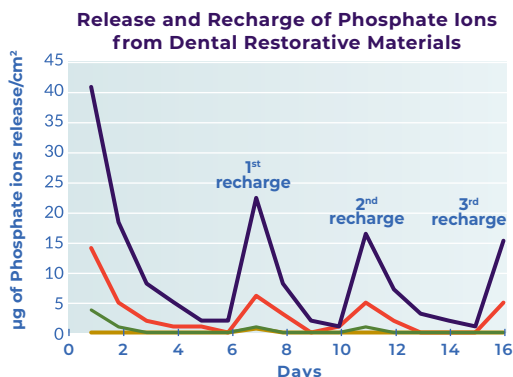
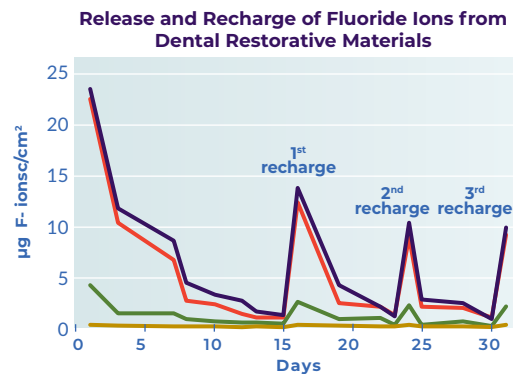
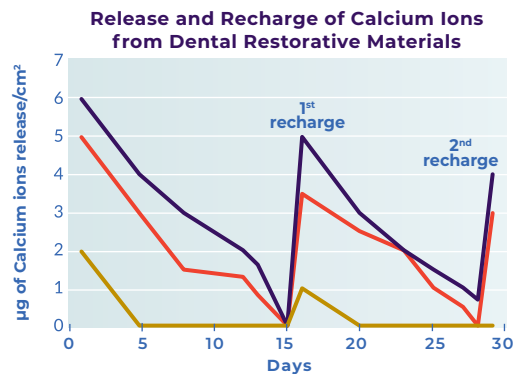


6 Finish and polish

CALCIUM, FLUORIDE & PHOSPHATE RELEASE / RECHARGE

The following graphs show the release and recharge of calcium, phosphate and fluoride ions. ACTIVA Presto and ACTIVA BioACTIVE display a continuous release and recharge of these essential minerals, which are naturally occurring in the saliva and are supplemented by dietary

sources and release from ACTIVA. This diffusion of ions is only available in materials that can transport water. Traditional hydrophobic materials are passive and do not have the capacity for this dynamic behavior.



- ACTIVA Presto
- ACTIVA BioACTIVE
- Beautiful Flow Plus
- Filtek Supreme

MECHANICAL PROPERTIES

Deflection at Break of ACTIVA Presto, which indicates toughness and fracture resistance, is superior to leading composites.

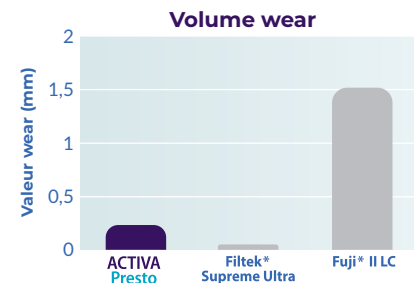
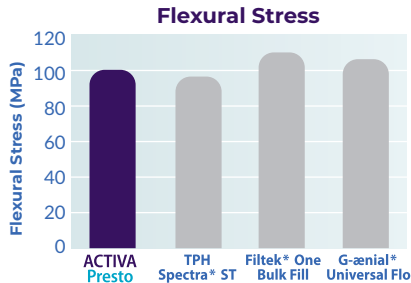
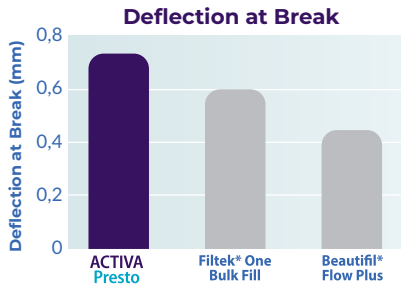
Source: Pulpdent testing

There is no statistical difference between the flexural strength of ACTIVA Presto and leading composites.

Source: The University of Tennessee Health Science Center

There is no statistical difference between the wear of ACTIVA Presto and Filtek Supreme Ultra.

Source: University of Alabama School of Dentistry



* Not trademarks of Pulpdent Corporation

PHYSICAL PROPERTIES

Light cure setting time: **20 ± 2 seconds**
 Depth of cure: **2.5mm**
 % filler by weight: **70%**
 Compressive strength: **327 MPa ± 15 MPa**

Diametral tensile strength: **53 MPa ± 2 MPa**
 Deflection at break: **0.7mm**
 Solubility: **0.26%**
 Radiopacity: **2.5 AL (250%)**

THE TOOTH IS THE STANDARD

Materials	Esthetic	Moisture-Friendly	High Strength	Releases/Recharges Calcium & Phosphate	Shock-Absorbent
Tooth Structure	yes	yes	yes	yes	yes
	yes	yes	yes	yes	yes
Composite	yes	no	yes	no	no

CODE AND DESCRIPTION

VPF1* - 2 x 2.2 gr (1.2mL) syringes + 20 applicator tips (19 ga)
 (* Specify Shade : A1, A2, A3, A3.5, A4, A6, B1, BW)

19K20 - Black, 19 ga x 1/2", Prebent Tips, Pkg. 20
19K100 - Black, 19 ga x 1/2", Prebent Tips, Pkg. 100

